

COUNTRYSIDE
— at —
KINGS HILL



This is a computer generated image of Crofton House, a similar apartment block at Countryside at Kings Hill

WESTLAND HOUSE

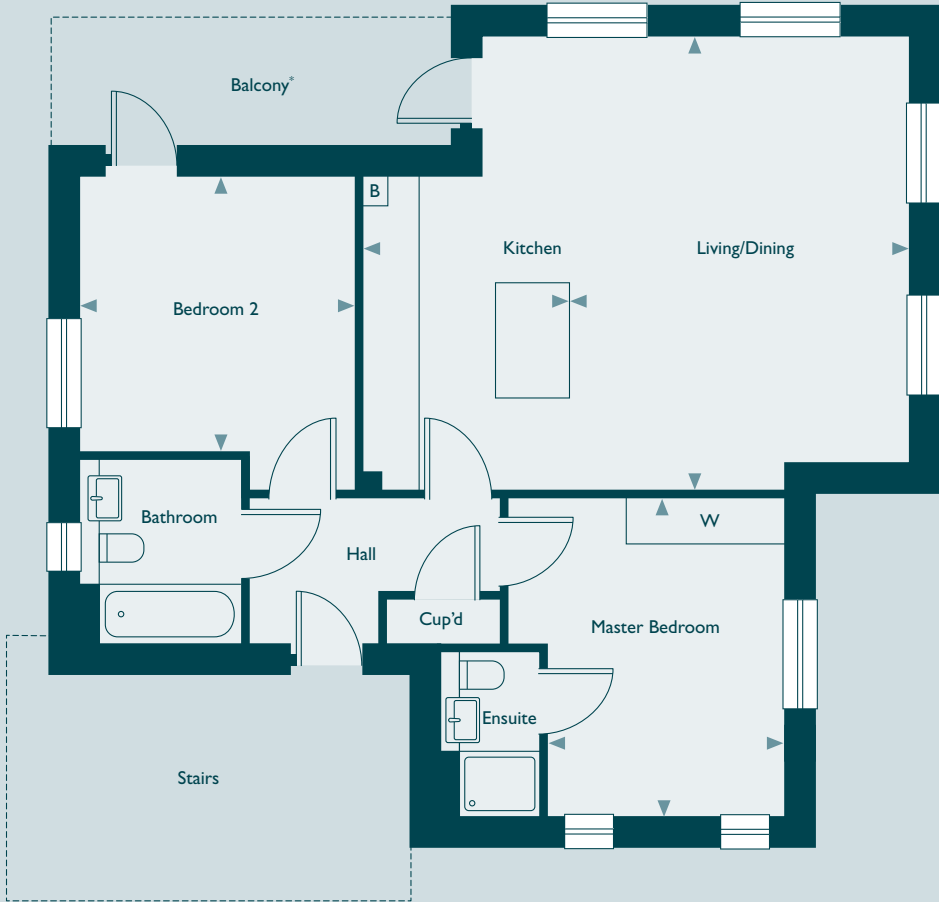
2 BEDROOM APARTMENTS

A stylish two bedroom apartment featuring a spacious open plan kitchen/dining/ living area with large feature windows. The home also benefits from a large master bedroom with en-suite shower room, further double bedroom and bathroom.



COUNTRYSIDE
Places People Love

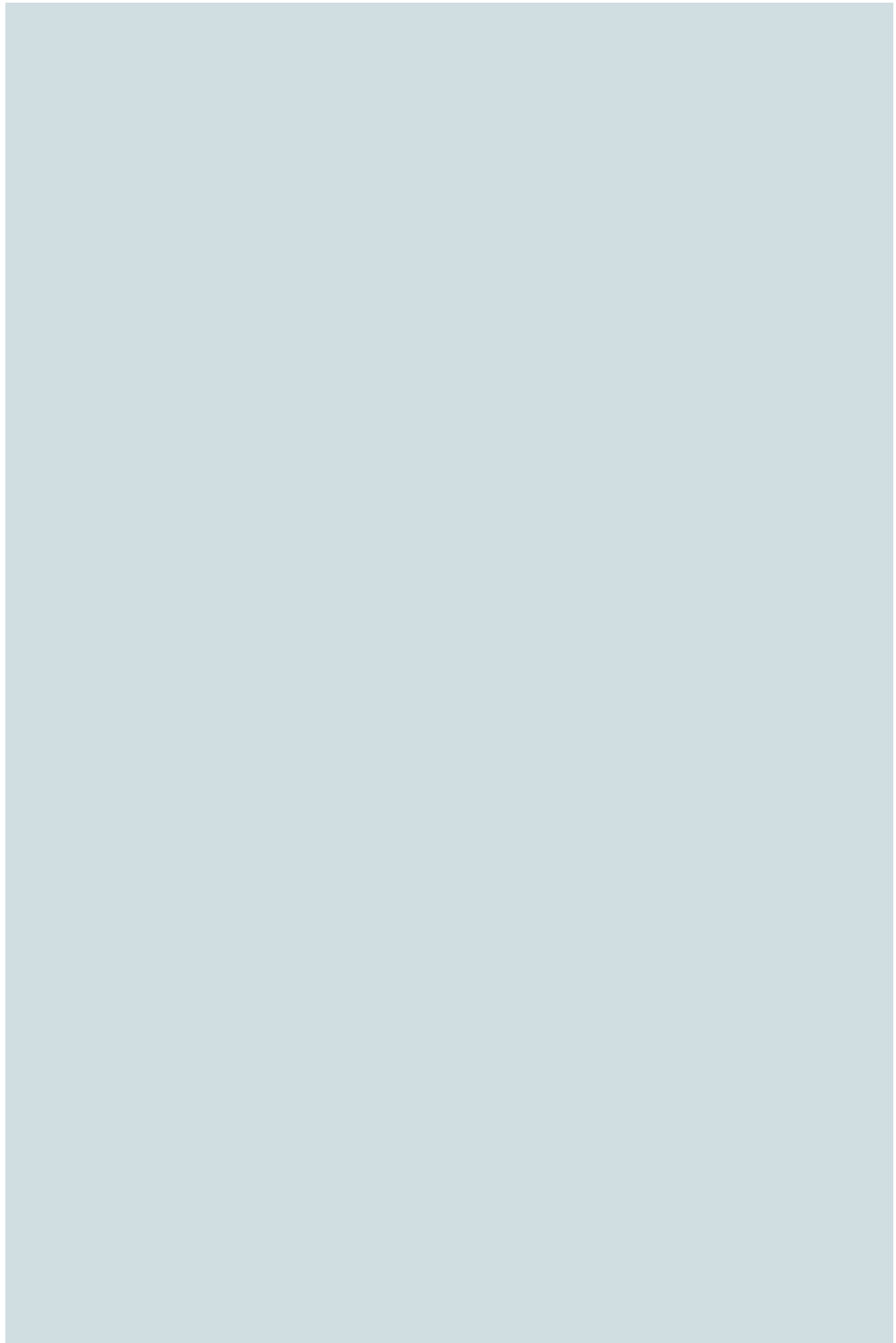
WESTLAND HOUSE (2 BEDROOM APARTMENTS)
PLOTS 61, 62, 63



Master Bedroom	2.86m x 3.82m	9'5" x 12'6"
Bedroom 2	3.28m x 3.27m	10'9" x 10'9"
Living/Dining	4.10m x 5.44m	13'5" x 17'10"
Kitchen	2.45m x 3.75m	8'0" x 12'4"
Total Internal Area: 72 sqm (775 sq ft)		

Cup'd – Cupboard B – Boiler W – Fitted wardrobe

*Balcony's are plot specific. Some plots may have Juliet balconies, some may have windows.



All room sizes are approximate showing maximum dimensions, which have been taken into the kitchen units. They are to finished measurements and are not intended for carpet sizes or items of furniture. Kitchen and bathroom layouts shown are indicative only.

Please ask Sales Consultants for detailed information regarding specific properties.

Every care has been taken in the preparation of this brochure. The details contained therein are for guidance only and should not be relied upon as exactly describing any of the particular material illustrated or written by any order under the Consumer Protection from Unfair Trading Regulations 2008. This information does not constitute a contract, part of a contract or warranty. Countryside operates a programme of continuous product development and all room layouts may be subject to minor modifications. Features, internal and external, may vary from time to time and may differ from those shown in the brochure.

Email: kingshill@cpplc.com
www.countrysideproperties.com/kingshill
01732 497609
Tower View, Kings Hill, Kent ME19 4HA



COUNTRYSIDE
Places People Love