

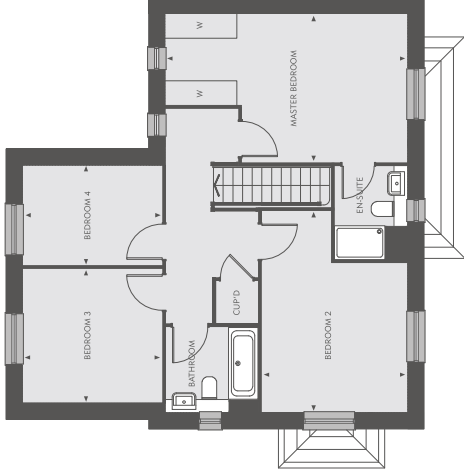
The Hawfinch

FOUR BEDROOM HOME

PLOTS - 2, 4, 23, 24¹, 31¹, 36, 37¹ & 50

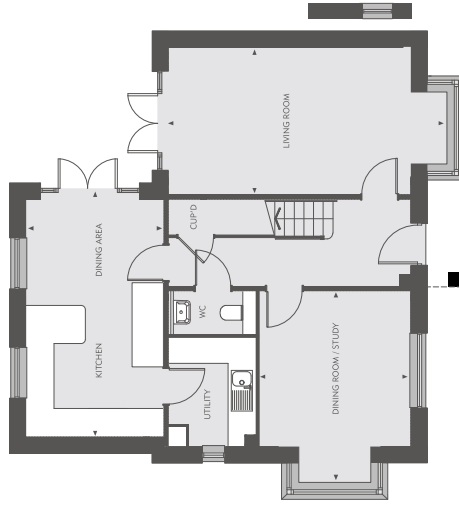
TOTAL INTERNAL FLOOR SPACE
148.04 SQ M (1593 SQ FT)

This elegant 4-bedroom detached home offers plenty of space for you to relax in comfort, with wide bay windows and glazed doors onto the rear garden. The open-plan kitchen / dining area and spacious living room are flooded with natural daylight. You'll also find a convenient utility room and downstairs cloakroom. Upstairs features three bedrooms plus a master bedroom with en-suite and a sleek family bathroom. This home offers plenty of storage space and a double garage.



FIRST FLOOR

MASTER BEDROOM 3.5M X 5.70M	11'6" X 18'8"
BEDROOM 2 4.75M X 3.43M	15'7" X 11'3"
BEDROOM 3 3.28M X 3.15M	10'9" X 10'4"
BEDROOM 4 3.28M X 2.34M	10'9" X 7'8"



GROUND FLOOR

KITCHEN / DINING AREA 5.58M X 3.22M	18'4" X 10'7"
LIVING ROOM 6.59M X 3.45M	21'7" X 11'4"
DINING ROOM / STUDY 4.54M X 3.56M	14'11" X 11'8"

¹ Plots 24, 31 and 37 are handed. ^o Window to plot 37 only.
CUPD - CUPBOARD W - FITTED WARDROBE

These floorplans and computer generated images are indicative only and depicts a typical Hawfinch, some properties may vary significantly from that shown. The floorplans are not to scale and are for information only. All dimensions are in millimetres. Kitchen and bathroom layouts are not indicated. Floorplans are not shown to scale. Please refer to development layout to review garage / parking variations for each plot. Plot specification, internal and external finishes, dimensions, landscaping and differences to plots should be checked with a Sales Consultant before reservation. Countryside reserves the right to amend specifications as necessary. Note: plots 4, 23, 24, 36, 37 and 50 have a detached garage. Plot 31 has an attached garage.