



BROOK VALLEY
— GARDENS —
CHIPPING BARNET ENS



The Caisho

PLOTS 369-376 & 393-398

A two storey three bedroom house featuring an open plan kitchen/dining area with French doors leading to the garden. The master bedroom features an en suite and private balcony.

Computer generated image. All elevations, architectural detailing and landscaping are indicative only and may vary from the illustration. Please speak to a Sales Consultant for further details.



COUNTRYSIDE
Places People Love

The Caisho

PLOTS 369-376 & 393-398

PLOTS 369 & 398

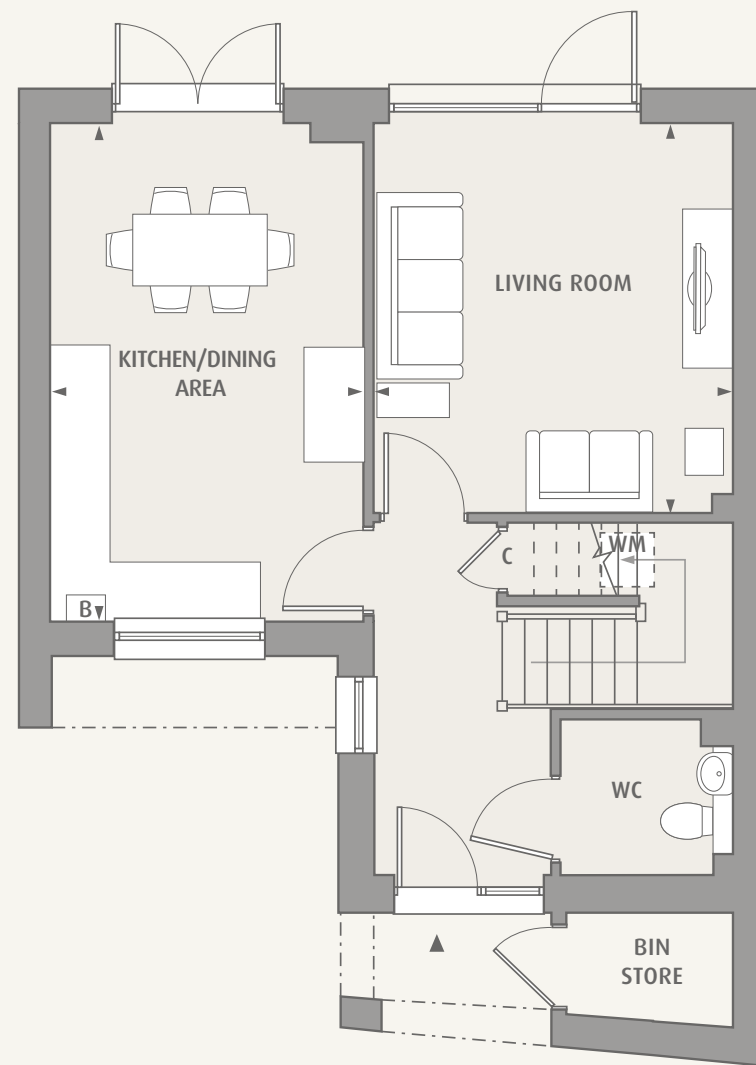
LIVING ROOM	4.08m x 3.72m	13'2" x 12'2"
KITCHEN/DINING AREA	5.18m x 3.27m	17'0" x 10'10"
MASTER BEDROOM	3.69m x 3.35m	12'1" x 10'11"
BEDROOM 2	3.72m x 3.20m	12'2" x 10'6"
BEDROOM 3	4.29m x 1.98m	14'1" x 6'6"
BALCONY	3.09m x 0.71m	10'1" x 2'3"
TOTAL INTERNAL AREA	99.6 sq.m.	1072.1 sq.ft.

PLOTS 370-373, 376 & 393 - 397

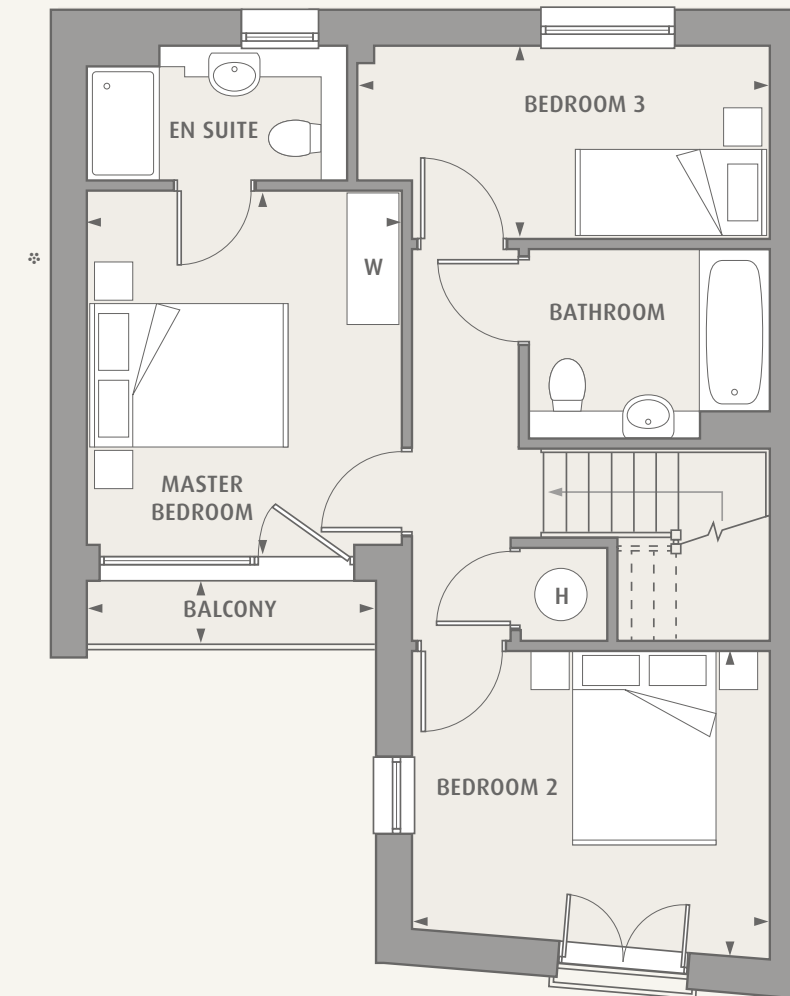
LIVING ROOM	4.08m x 3.72m	13'2" x 12'2"
KITCHEN/DINING AREA	5.18m x 3.25m	16'11" x 10'10"
MASTER BEDROOM	3.69m x 3.30m	12'1" x 10'10"
BEDROOM 2	3.71m x 3.20m	12'2" x 10'6"
BEDROOM 3	4.29m x 1.98m	14'1" x 6'6"
BALCONY	3.04m x 0.71m	9'11" x 2'3"
TOTAL INTERNAL AREA	99.1 sq.m.	1066.17 sq.ft.

PLOTS 374-375

LIVING ROOM	4.08m x 3.72m	13'2" x 12'2"
KITCHEN/DINING AREA	5.18m x 3.42m	17'0" x 11'2"
MASTER BEDROOM	3.69m x 3.47m	12'1" x 11'5"
BEDROOM 2	3.72m x 3.20m	12'2" x 10'6"
BEDROOM 3	4.30m x 1.98m	14'1" x 6'6"
BALCONY	3.23m x 0.70m	10'7" x 2'3"
TOTAL INTERNAL AREA	100.1 sq.m.	1077.4 sq.ft.



Ground Floor



First Floor

All room sizes are approximate showing maximum dimensions which have been taken into the kitchen units. They are to finished measurements and are not intended for carpet sizes or items of furniture. Countryside operates a policy of continuous product development and all room layouts may be subject to minor modifications. Kitchen and bathroom layouts shown are indicative only. Please ask Sales Consultants for detailed information regarding specific properties. *Plot 369 has an additional window here. Please speak to the Sales Consultant for further information. Plots 370, 372, 374, 376, 393, 395 & 397 are handed, please speak to a sales consultant for further details.

- B - BOILER
- C - CUPBOARD
- H - HOT WATER CYLINDER
- W - WARDROBE
- W/M - WASHER/DRIER

Brook Valley Gardens Sales and Marketing Suite
Hera Avenue, Chipping Barnet EN5 2FH

brookvalleygardens.co.uk



COUNTRYSIDE
Places People Love