



## THE HOLLY

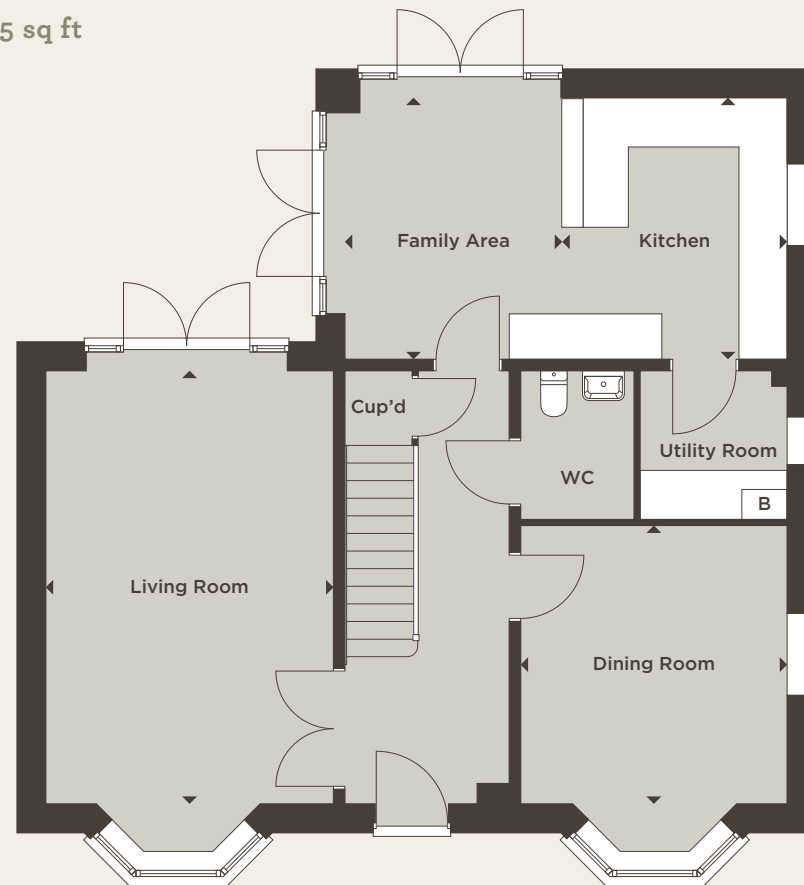


Four bedroom detached house

# THE HOLLY

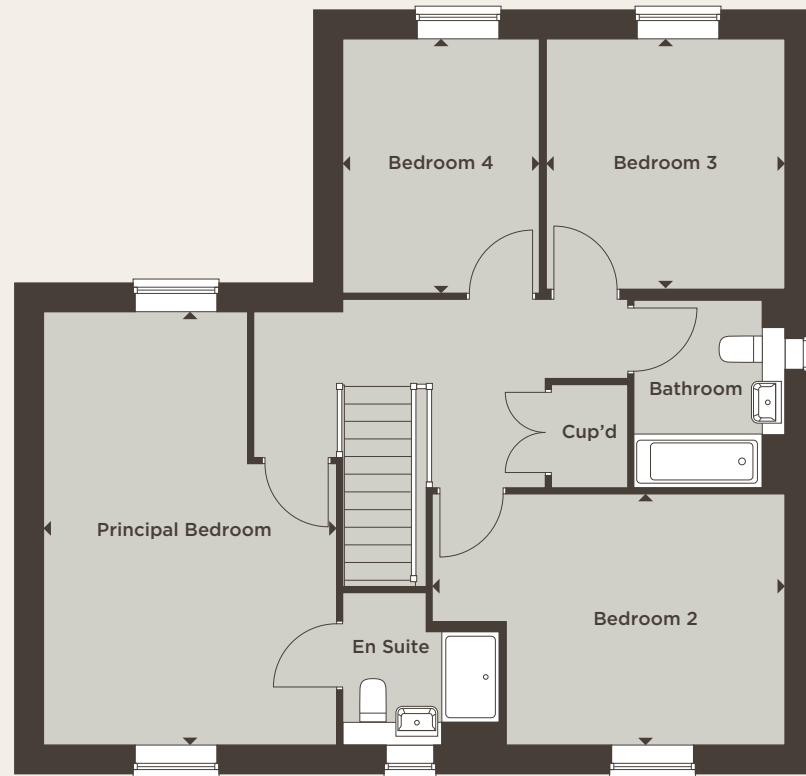
An impressive four bedroom house with garage, with a spacious kitchen and family area that boasts double French doors which open onto the garden. It also has separate living and dining rooms, a cloakroom and a utility room. The first floor features the principal bedroom with luxury en suite, plus three further double bedrooms and the family bathroom.

Total Internal Area 156.50 sq m 1695 sq ft



## Ground Floor

Kitchen	3.46m x 2.99m	11'4" x 9'10"
Family Area	3.46m x 2.86m	11'4" x 9'5"
Living Room	5.73m x 3.81m	18'10" x 12'6"
Dining Room	3.68m x 3.53m	12'1" x 11'7"



### First Floor

Principal Bedroom	5.73m x 3.88m	18'10" x 12'9"
Bedroom 2	4.67m x 3.32m	15'4" x 10'11"
Bedroom 3	3.37m x 3.16m	11'1" x 10'4"
Bedroom 4	3.37m x 2.61m	11'1" x 8'7"
<b>Total Internal Area</b>	<b>156.50 sq m</b>	<b>1695 sq ft</b>



[WWW.STLUKESPARK.CO.UK](http://WWW.STLUKESPARK.CO.UK)



**COUNTRYSIDE**  
Places People Love

Computer generated image, architectural detailing, materials and landscaping may vary from the illustration.  
All sizes are approximate with maximum finished dimensions. CountrySide operates a policy of continuous product development and all room layouts may be subject to minor modifications. Kitchen and bathroom layouts and floor tiling shown are indicative. Radiator locations are not indicated. Please refer to development layout to review garage variations for each plot. Please note some plots are handed. Please speak to Sales Consultants for detailed information regarding specific properties.