



THE LAUREL

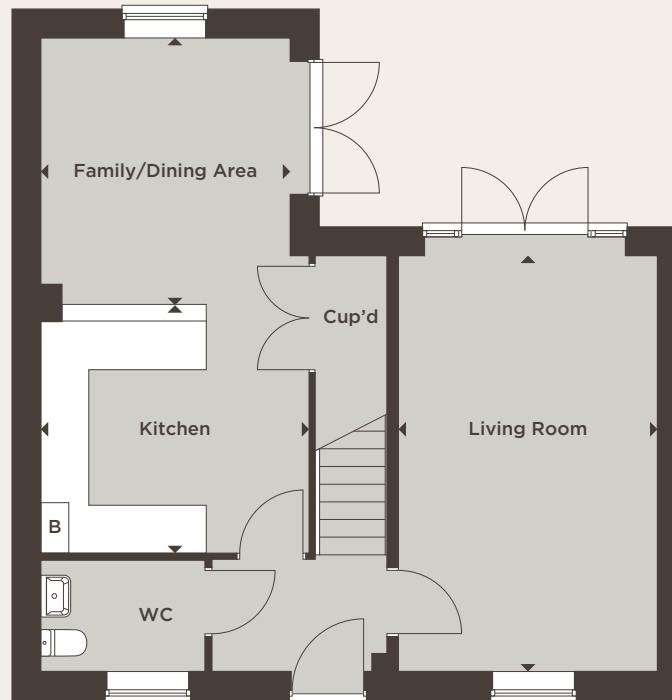


Three bedroom house

THE LAUREL

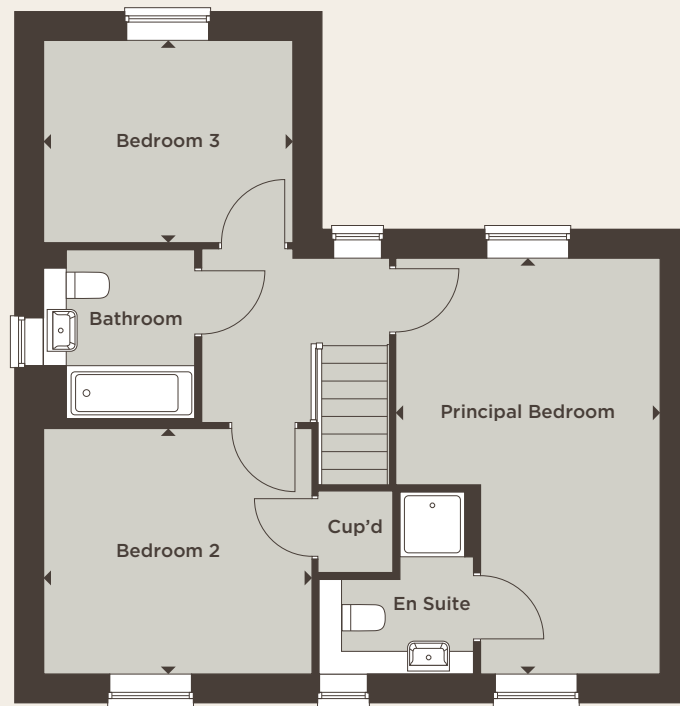
A well-planned three bedroom family home including a garage. The ground floor comprises an open plan kitchen, family/dining area – ideal for entertaining, plus there is a separate living room which opens onto the garden. A spacious principal bedroom featuring a luxurious en suite is located on the first floor, along with two further bedrooms and the family bathroom.

Total Internal Area 108.80 sq m 1170 sq ft



Ground Floor

Kitchen	3.55m x 3.28m	11'8" x 10'9"
Family/Dining Area	3.54m x 3.30m	11'7" x 10'10"
Living Room	5.50m x 3.43m	18'1" x 11'3"



First Floor

Principal Bedroom	5.50m x 3.50m	18'1" x 11'6"
Bedroom 2	3.55m x 3.25m	11'8" x 10'8"
Bedroom 3	3.30m x 2.68m	10'10" x 8'9"
Total Internal Area	108.80 sq m	1170 sq ft



WWW.STLUKESPARK.CO.UK



COUNTRYSIDE
Places People Love

Computer generated image, architectural detailing, materials and landscaping may vary from the illustration.
All sizes are approximate with maximum finished dimensions. Countryside operates a policy of continuous product development and all room layouts may be subject to minor modifications. Kitchen and bathroom layouts and floor tiling shown are indicative. Radiator locations are not indicated. Please refer to development layout to review garage variations for each plot. Please note some plots are handed. Please speak to Sales Consultants for detailed information regarding specific properties.