



WWW.STLUKESPARK.CO.UK



COUNTRYSIDE
Places People Love

Computer generated image, architectural detailing, materials and landscaping may vary from the illustration. All sizes are approximate with maximum finished dimensions. Countryside operates a policy of continuous product development and all room layouts may be subject to minor modifications. Kitchen and bathroom layouts and floor tiling shown are indicative. Radiator locations are not indicated. Please refer to development layout to review garage variations for each plot. Please note some plots are handed. Please speak to Sales Consultants for detailed information regarding specific properties.



THE MOUNTBATTEN



Five bedroom detached house

THE MOUNTBATTEN

This luxurious five bedroom detached house comprises an open plan kitchen, family/dining area with feature roof windows and two double doors to the garden. The first floor offers a spacious principal bedroom complete with fitted wardrobes and luxurious en suite, plus three further bedrooms. Two double bedrooms make up the second floor, one of which could be used as a cinema.

Total Internal Area 238.40 sq m 2566 sq ft



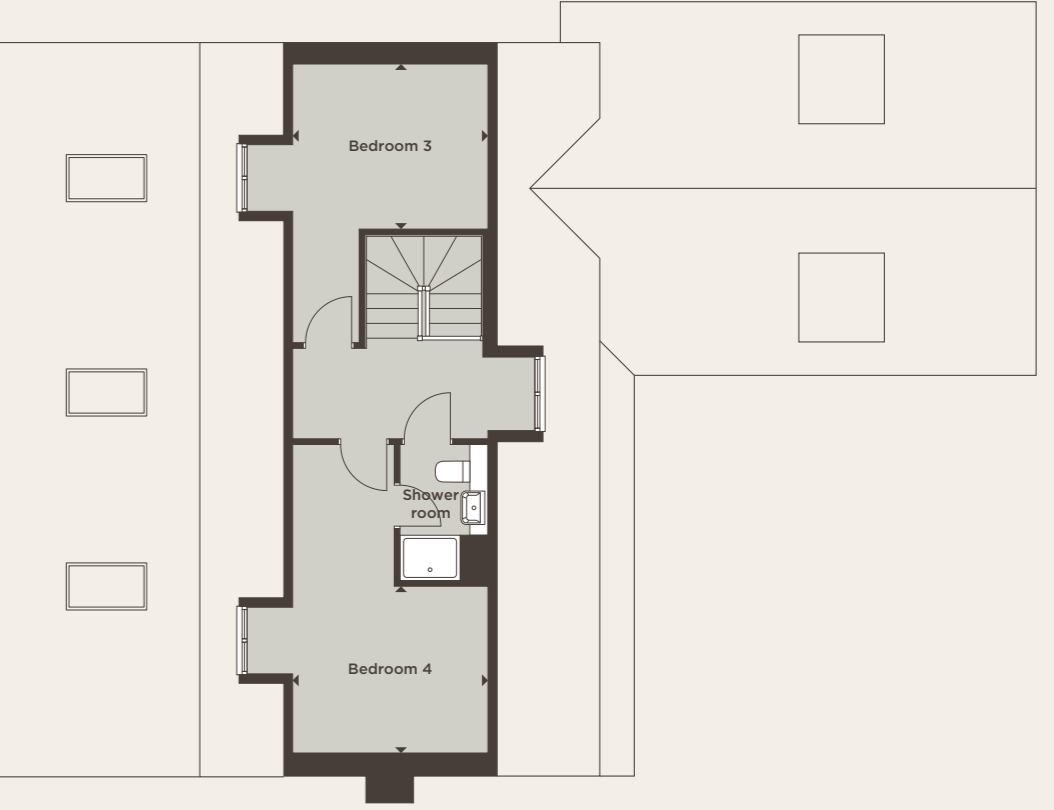
Ground Floor

Kitchen	5.58m x 3.50m	18'4" x 11'6"
Family/Dining Area	7.88m x 4.04m	25'10" x 13'3"
Living Room	6.46m x 3.62m	21'2" x 11'10"
Study	4.73m x 2.64m	15'7" x 8'8"



First Floor

Principal Bedroom	7.11m x 3.09m	23'4" x 10'2"
Bedroom 2	5.14m x 2.74m	16'10" x 9'0"
Bedroom 5	3.60m x 2.72m	11'10" x 8'11"



Second Floor

Bedroom 3	3.23m x 2.73m	10'7" x 9'0"
Bedroom 4	3.23m x 2.76m	10'7" x 9'2"
Total Internal Area	238.40 sq m	2566 sq ft

Key

A/C	Airing cupboard
W	Wardrobe

Please note, this floor plan and computer generated image depicts a typical Mountbatten house type, however some properties may vary from that shown. Please ask a Sales Consultant for full specific plot details.