



## THE OAK



Five bedroom detached house

# THE OAK

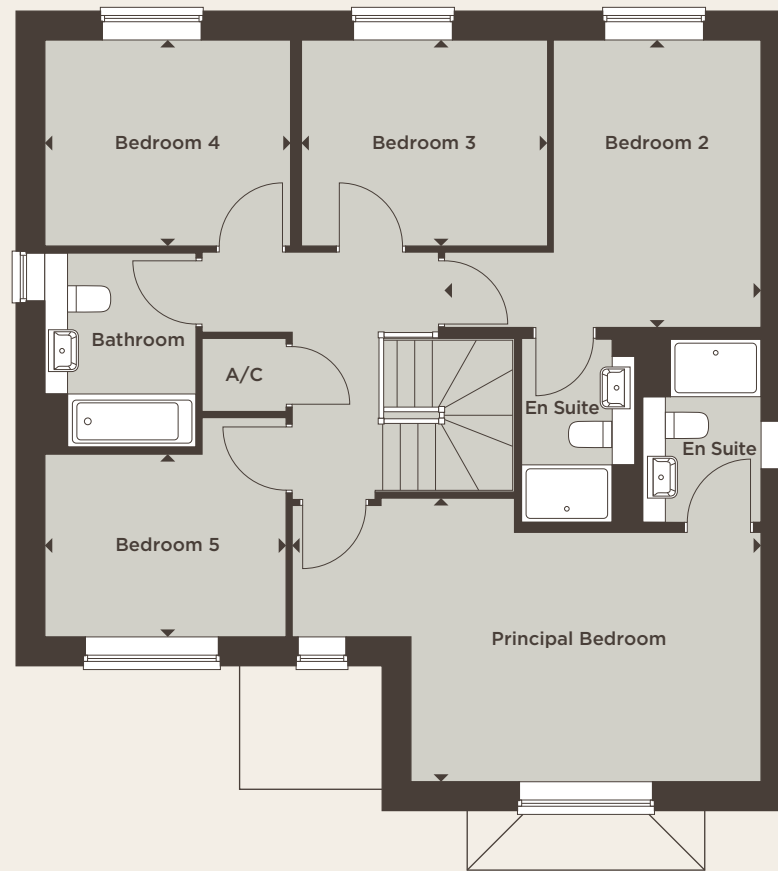
This well designed, five bedroom detached house comes complete with a stylish kitchen, family/dining area plus separate living and dining rooms, perfect for entertaining. You will find five generously sized bedrooms on the first floor offering a principal bedroom with luxurious en suite and four further bedrooms including one with an en suite.

**Total Internal Area 169.10 sq m 1820 sq ft**



## Ground Floor

Kitchen	3.80m x 3.09m	12'5" x 10'2"	Dining Room	3.80m x 3.18m	12'5" x 10'5"
Family Area	3.80m x 3.13m	12'5" x 10'3"	Study	3.02m x 2.42m	9'11" x 7'11"
Living Room	4.63m x 3.68m	15'2" x 12'1"			



**First Floor**

Principal Bedroom	6.20m x 3.75m	20'4" x 12'4"	Bedroom 4	3.28m x 2.73m	10'9" x 8'11"
Bedroom 2	4.19m x 3.83m	13'9" x 12'7"	Bedroom 5	3.19m x 2.38m	10'6" x 7'10"
Bedroom 3	3.28m x 2.73m	10'9" x 8'11"	Total Internal Area	169.10 sq m	1820 sq ft

**Key**

A/C Airing cupboard



[WWW.STLUKESPARK.CO.UK](http://WWW.STLUKESPARK.CO.UK)



**COUNTRYSIDE**  
Places People Love

Computer generated image, architectural detailing, materials and landscaping may vary from the illustration.  
All sizes are approximate with maximum finished dimensions. Countryside operates a policy of continuous product development and all room layouts may be subject to minor modifications. Kitchen and bathroom layouts and floor tiling shown are indicative. Radiator locations are not indicated. Please refer to development layout to review garage variations for each plot. Please note some plots are handed. Please speak to Sales Consultants for detailed information regarding specific properties.