



WOLSEY PARK

RAYLEIGH • ESSEX

This attractive four bedroom home provides plenty of space for a growing family. The property offers both separate living and dining rooms which could also be used as a family/play room, as well as an open plan kitchen/breakfast/dining area and utility room. The first floor boasts a generously-sized en suite master bedroom, three further bedrooms plus a family bathroom.



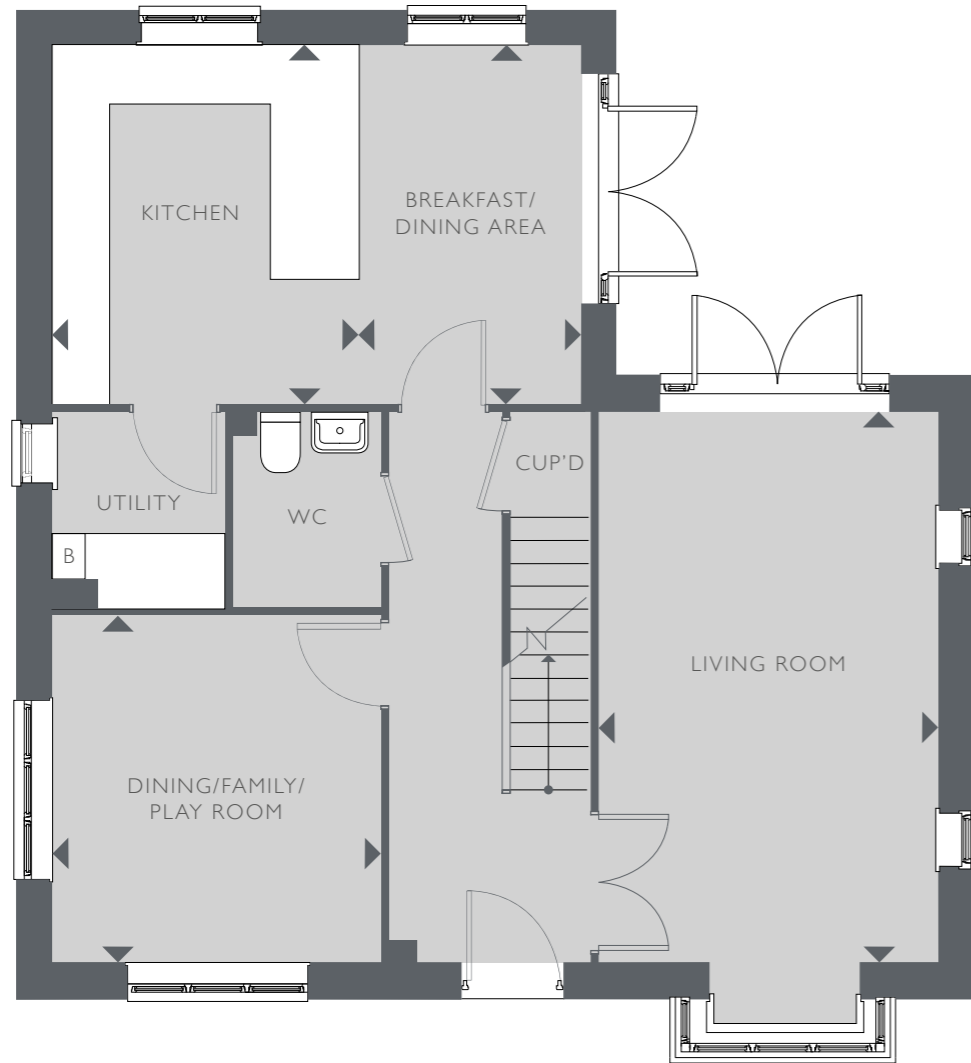
THE CHELMER

4 BEDROOM HOME

COUNTRYSIDE
Places People Love

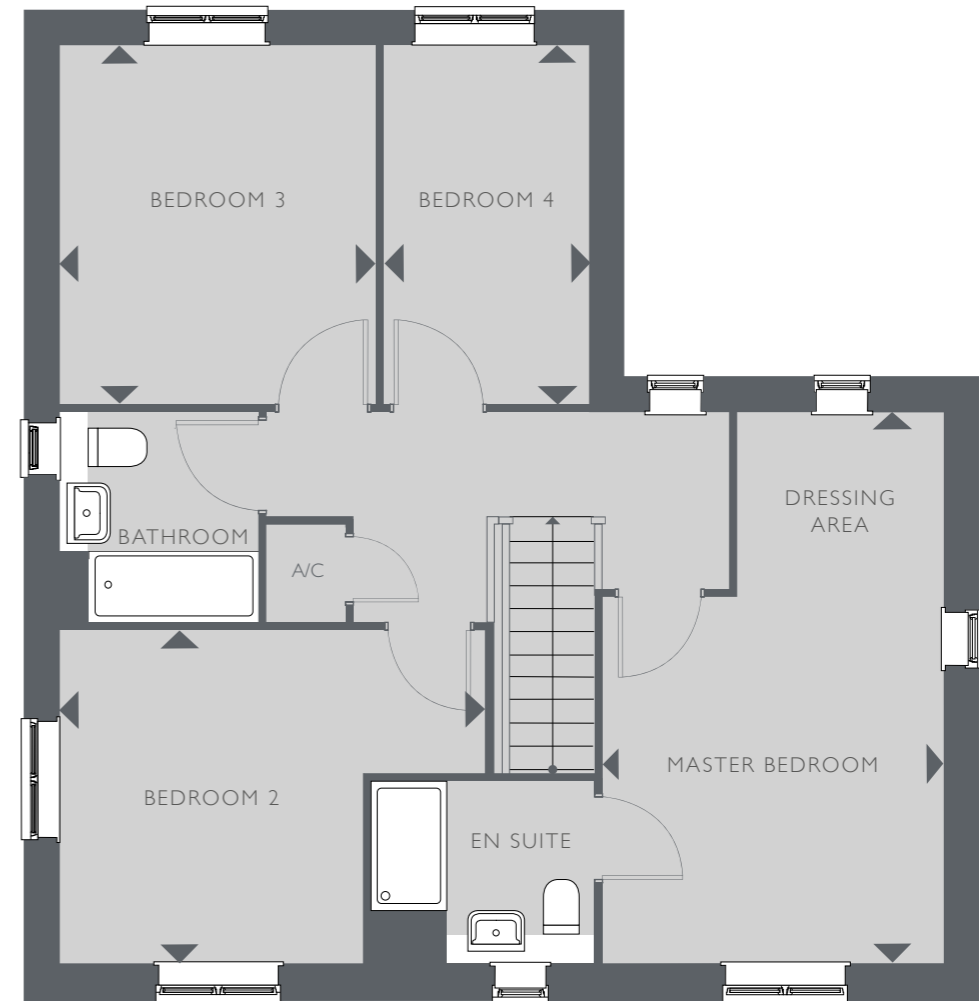
THE CHELMER

TOTAL INTERNAL FLOOR SPACE 140.96 SQ M (1517.3 SQ FT)



GROUND FLOOR

KITCHEN	3.56M X 3.10M	11'8" X 10'2"
BREAKFAST/DINING AREA	3.56M X 2.26M	11'8" X 7'5"
LIVING ROOM	5.58M X 3.40M	18'4" X 11'2"
DINING/FAMILY/PLAY ROOM	3.52M X 3.29M	11'7" X 10'10"



FIRST FLOOR

MASTER BEDROOM	5.58M X 3.45M	18'4" X 11'4"
BEDROOM 2	4.29M X 3.38M	14'1" X 11'1"
BEDROOM 3	3.58M X 3.19M	11'9" X 10'6"
BEDROOM 4	3.61M X 2.07M	11'10" X 6'10"

A/C – AIRING CUPBOARD B – BOILER CUP'D – CUPBOARD WC – CLOAKROOM

This floorplan and computer generated image is indicative only and depicts a typical Chelmer; some properties may vary significantly from that shown. All sizes are approximate with maximum finished dimensions. Countryside operates a policy of continuous product development and all room layouts may be subject to minor modifications. Kitchen and bathroom layouts are indicative. Radiator locations are not indicated. Floorplans are not shown to scale. Please refer to development layout to review garage/parking variations for each plot. Plot specification, internal and external finishes, dimensions, landscaping and differences to plots should be checked with a Sales Consultant before reservation. Countryside reserves the right to amend specifications as necessary.

WOLSEY PARK

RAYLEIGH

www.countrysideproperties.com

01268 855340

wolseypark@cpplc.com

Marketing Suite open daily from 10am - 5pm.
Rawreth Lane, Rayleigh, Essex SS6 9RH



COUNTRYSIDE

Places People Love