

MULBERRY
GREEN

HATFIELD PEVEREL

An impressive four bedroom home with plenty of space, featuring separate dining and living rooms as well as an open plan kitchen/family area with utility room. The first floor benefits from a well-sized master bedroom with a dressing room and en suite, three additional bedrooms plus a family bathroom.



THE CHELMER

4 BEDROOM HOME



COUNTRYSIDE

Places People Love

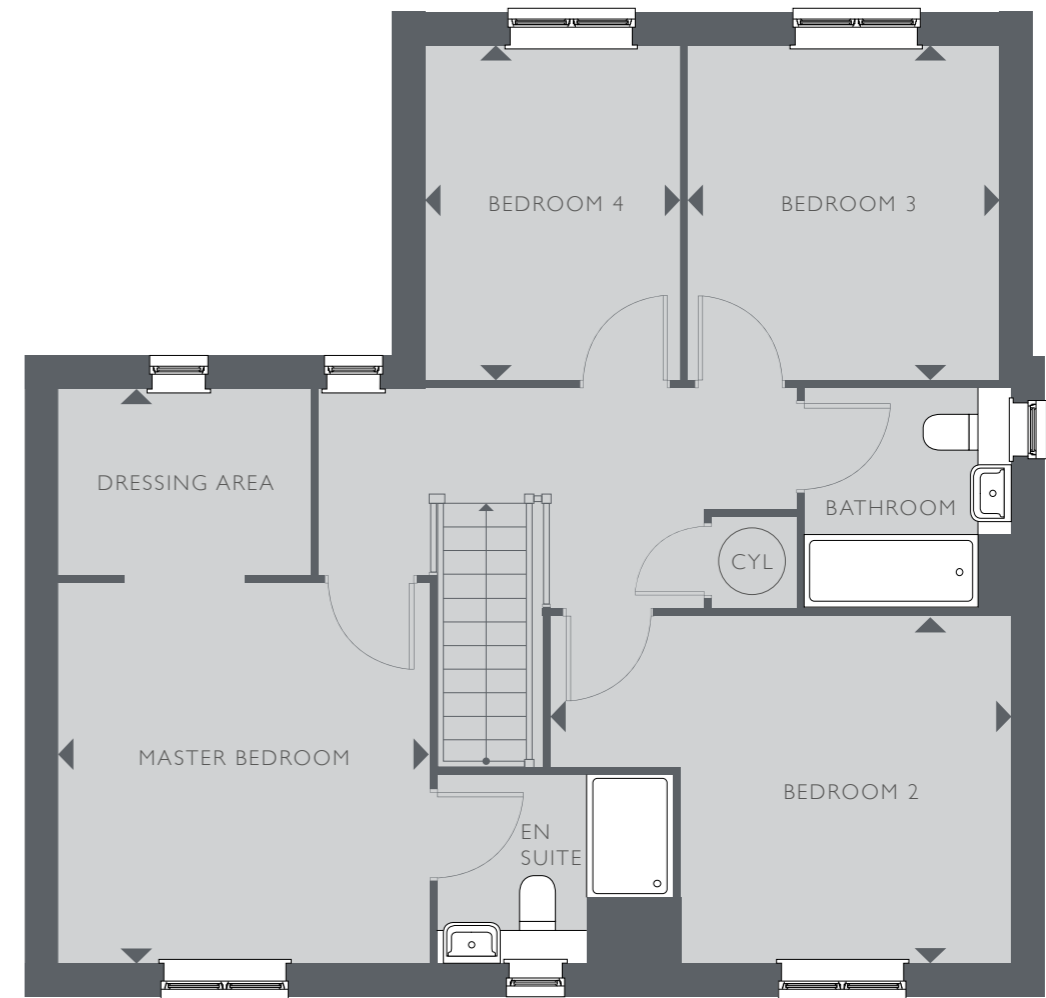
THE CHELMER

TOTAL INTERNAL FLOOR SPACE 144.2 SQ M (1,552.2 SQ FT)



GROUND FLOOR

KITCHEN	3.23M X 3.22M	10'7" X 10'7"
FAMILY/ DINING AREA	3.22M X 2.34M	10'7" X 7'8"
LIVING ROOM	5.58M X 3.55M	18'4" X 11'8"
DINING ROOM	3.52M X 3.41M	11'7" X 11'2"



FIRST FLOOR

MASTER BEDROOM	5.58M X 3.60M	18'4" X 11'10"
BEDROOM 2	4.48M X 3.38M	14'9" X 11'1"
BEDROOM 3	3.24M X 3.00M	10'8" X 9'10"
BEDROOM 4	3.28M X 2.49M	10'9" X 8'2"

B – BOILER CUP'D – CUPBOARD CYL – CYLINDER WC – CLOAKROOM

This floorplan and computer generated image is indicative only and depicts a typical Chelmer; some properties may vary significantly from that shown. All sizes are approximate with maximum finished dimensions. Countryside operates a policy of continuous product development and all room layouts may be subject to minor modifications. Kitchen and bathroom layouts are indicative. Radiator locations are not indicated. Floorplans are not shown to scale. Please refer to development layout to review garage/parking variations for each plot. Plot specification, internal and external finishes, dimensions, landscaping and differences to plots should be checked with a Sales Consultant before reservation. Countryside reserves the right to amend specifications as necessary.

MULBERRY GREEN

HATFIELD PEVEREL

www.mulberrygreen.homes

01245 808921

mulberrygreen@cpplc.com

Marketing Suite open Thursday – Monday from 10am to 5pm
Bury Lane, Hatfield Peverel, Essex CM3 2DG



COUNTRYSIDE

Places People Love