

MULBERRY
GREEN

HATFIELD PEVEREL

A unique two bedroom home perfect for first-time buyers and couples, boasting a well-equipped kitchen leading on to an open plan living/dining area with Juliette balcony. Plus, a generous master bedroom, good sized second bedroom and a separate bathroom.



THE OSPREY

2 BEDROOM HOME



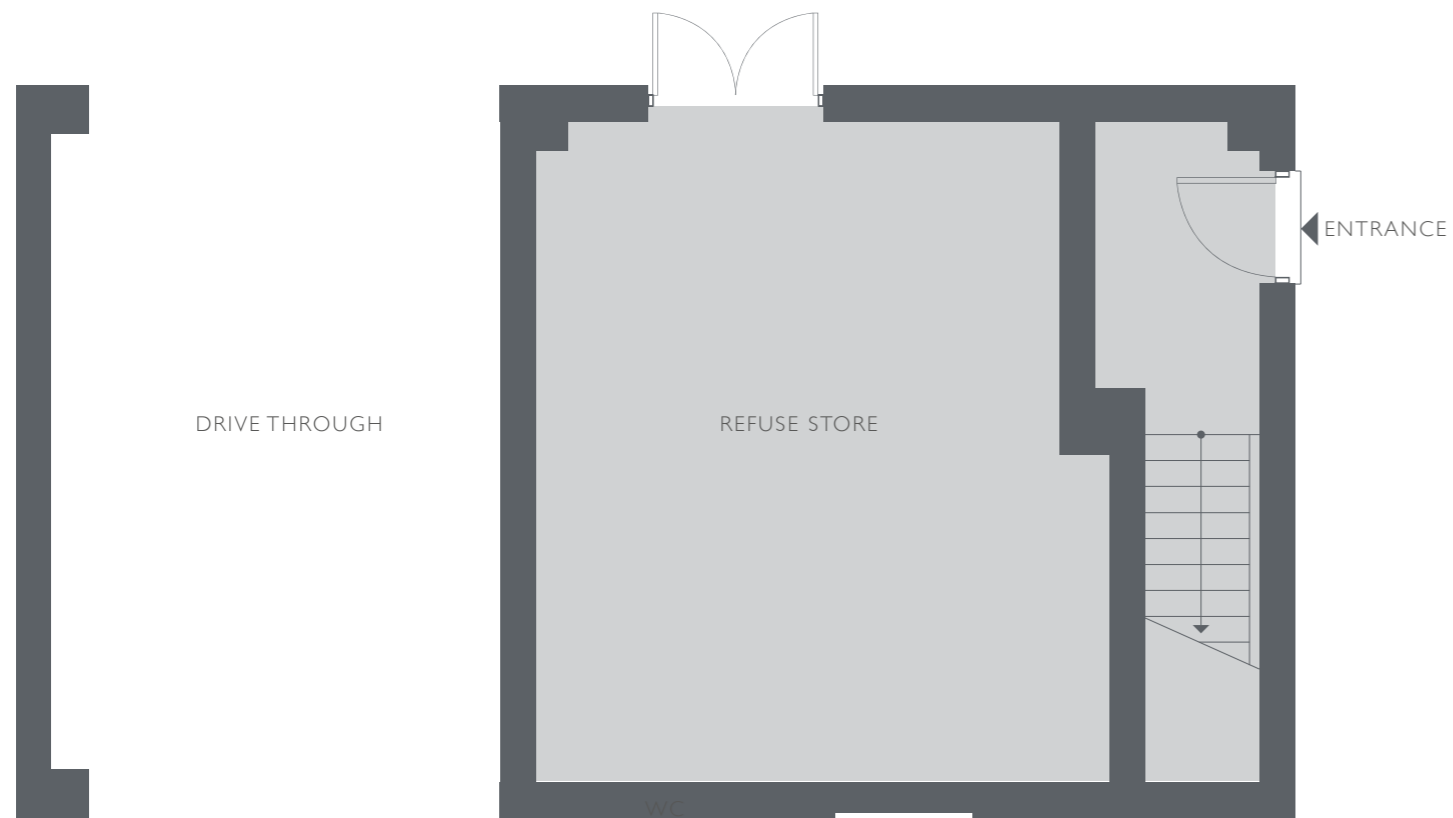
COUNTRYSIDE

Places People Love

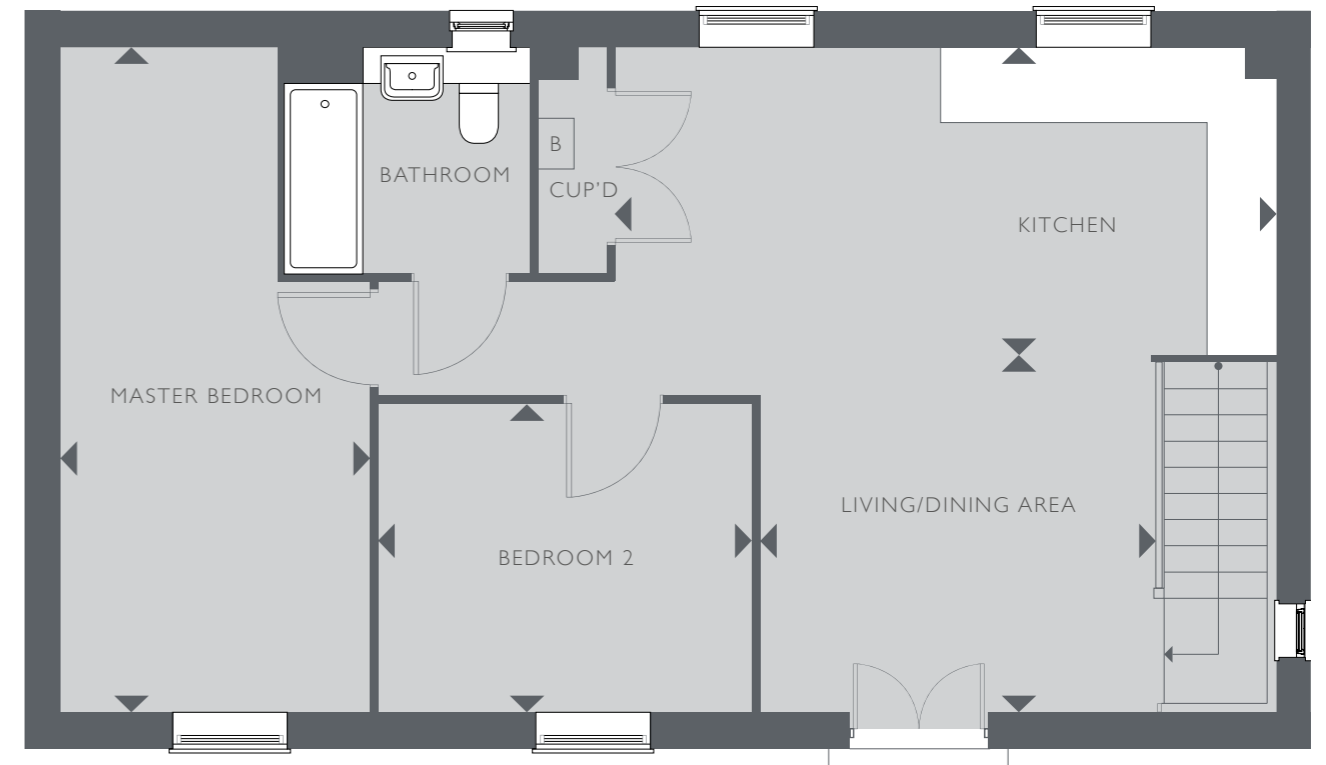
THE OSPREY

TOTAL INTERNAL FLOOR SPACE 71.7 SQ M (772.2 SQ FT)

MULBERRY GREEN | HATFIELD PEVEREL | CM3 2DG



GROUND FLOOR



FIRST FLOOR

| | | |
|------------------------|---------------|-----------------|
| KITCHEN | 5.90M × 2.08M | 19' 5" × 6' 10" |
| LIVING/ DINING AREA | 3.83M × 3.56M | 12' 7" × 11' 8" |
| MASTER BEDROOM | 5.92M × 2.76M | 19' 5" × 9' 1" |
| BEDROOM 2 | 3.32M × 2.75M | 10' 11" × 9' 0" |

B – BOILER CUP'D – CUPBOARD

This floorplan and computer generated image is indicative only and depicts a typical Osprey, some properties may vary significantly from that shown. All sizes are approximate with maximum finished dimensions. Countryside operates a policy of continuous product development and all room layouts may be subject to minor modifications. Kitchen and bathroom layouts are indicative. Radiator locations are not indicated. Floorplans are not shown to scale. Please refer to development layout to review garage/parking variations for each plot. Plot specification, internal and external finishes, dimensions, landscaping and differences to plots should be checked with a Sales Consultant before reservation. Countryside reserves the right to amend specifications as necessary.

MULBERRY GREEN

HATFIELD PEVEREL

www.mulberrygreen.homes

01245 808921

mulberrygreen@cpplc.com

Marketing Suite open Thursday – Monday from 10am to 5pm
Bury Lane, Hatfield Peverel, Essex CM3 2DG



COUNTRYSIDE

Places People Love