

MULBERRY
GREEN

HATFIELD PEVEREL

A stylish four bedroom home featuring an open plan kitchen/dining area leading out into the garden plus a separate living room complete with feature bay window. The first floor offers an impressive master bedroom with en suite, three further bedrooms and a family bathroom.



THE TURNSTONE

4 BEDROOM HOME

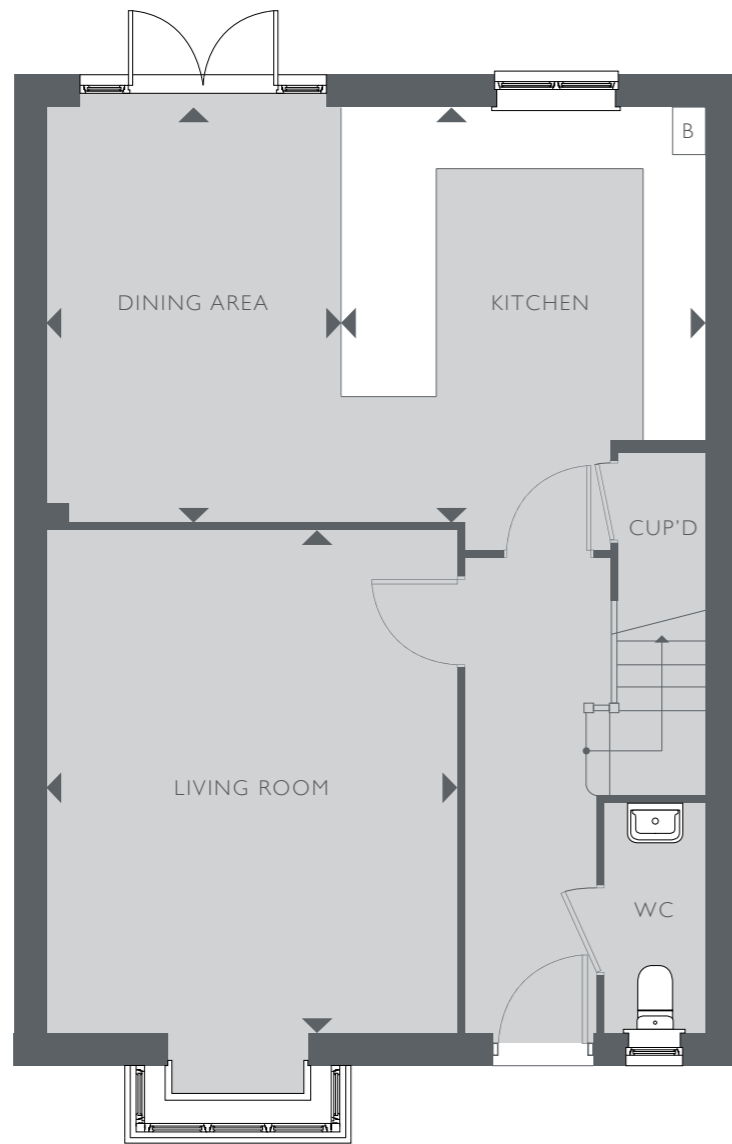


COUNTRYSIDE

Places People Love

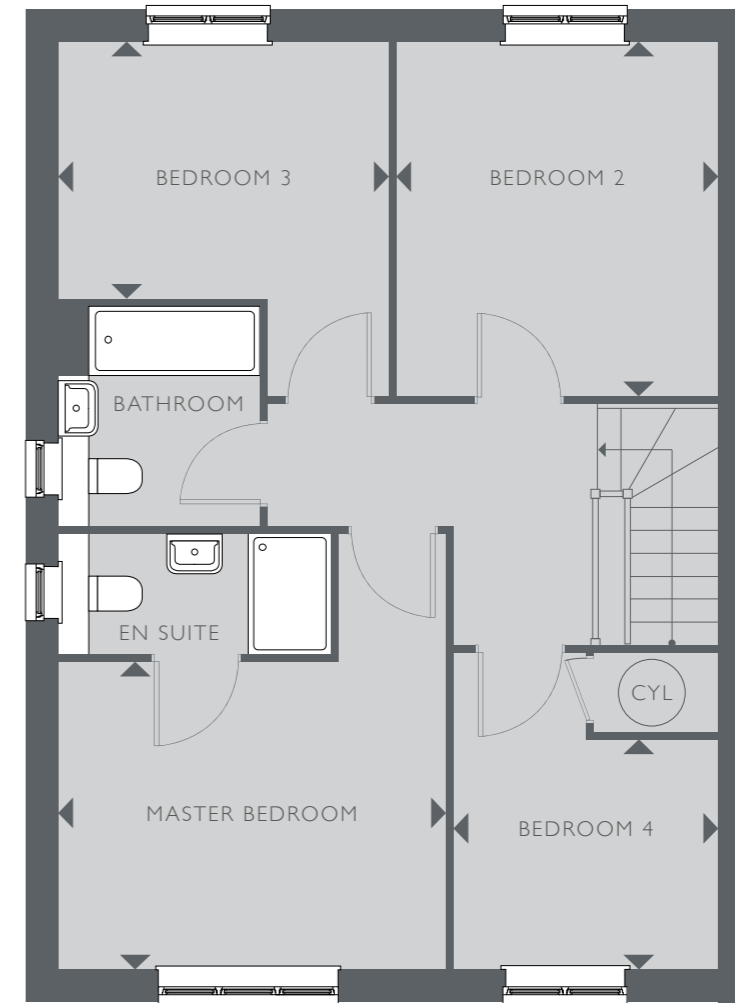
THE TURNSTONE

TOTAL INTERNAL FLOOR SPACE 124.6 SQ M (1,341 SQ FT)



GROUND FLOOR

KITCHEN	4.14M X 3.35M	13'7" X 11'0"
DINING AREA	4.14M X 3.24M	13'7" X 10'8"
LIVING ROOM	5.00M X 4.08M	16'5" X 13'5"



FIRST FLOOR

MASTER BEDROOM	3.86M X 3.07M	12'8" X 10'1"
BEDROOM 2	3.51M X 3.17M	11'6" X 10'5"
BEDROOM 3	3.30M X 2.53M	10'10" X 8'4"
BEDROOM 4	2.60M X 2.27M	8'6" X 7'6"

B – BOILER CUP'D – CUPBOARD CYL – CYLINDER WC – CLOAKROOM

This floorplan and computer generated image is indicative only and depicts a typical Turnstone, some properties may vary significantly from that shown. All sizes are approximate with maximum finished dimensions. Countryside operates a policy of continuous product development and all room layouts may be subject to minor modifications. Kitchen and bathroom layouts are indicative. Radiator locations are not indicated. Floorplans are not shown to scale. Please refer to development layout to review garage/parking variations for each plot. Plot specification, internal and external finishes, dimensions, landscaping and differences to plots should be checked with a Sales Consultant before reservation. Countryside reserves the right to amend specifications as necessary.

MULBERRY GREEN

HATFIELD PEVEREL

www.mulberrygreen.homes

01245 808921

mulberrygreen@cpplc.com

Marketing Suite open Thursday – Monday from 10am to 5pm
Bury Lane, Hatfield Peverel, Essex CM3 2DG



COUNTRYSIDE

Places People Love