



THE MAPLE

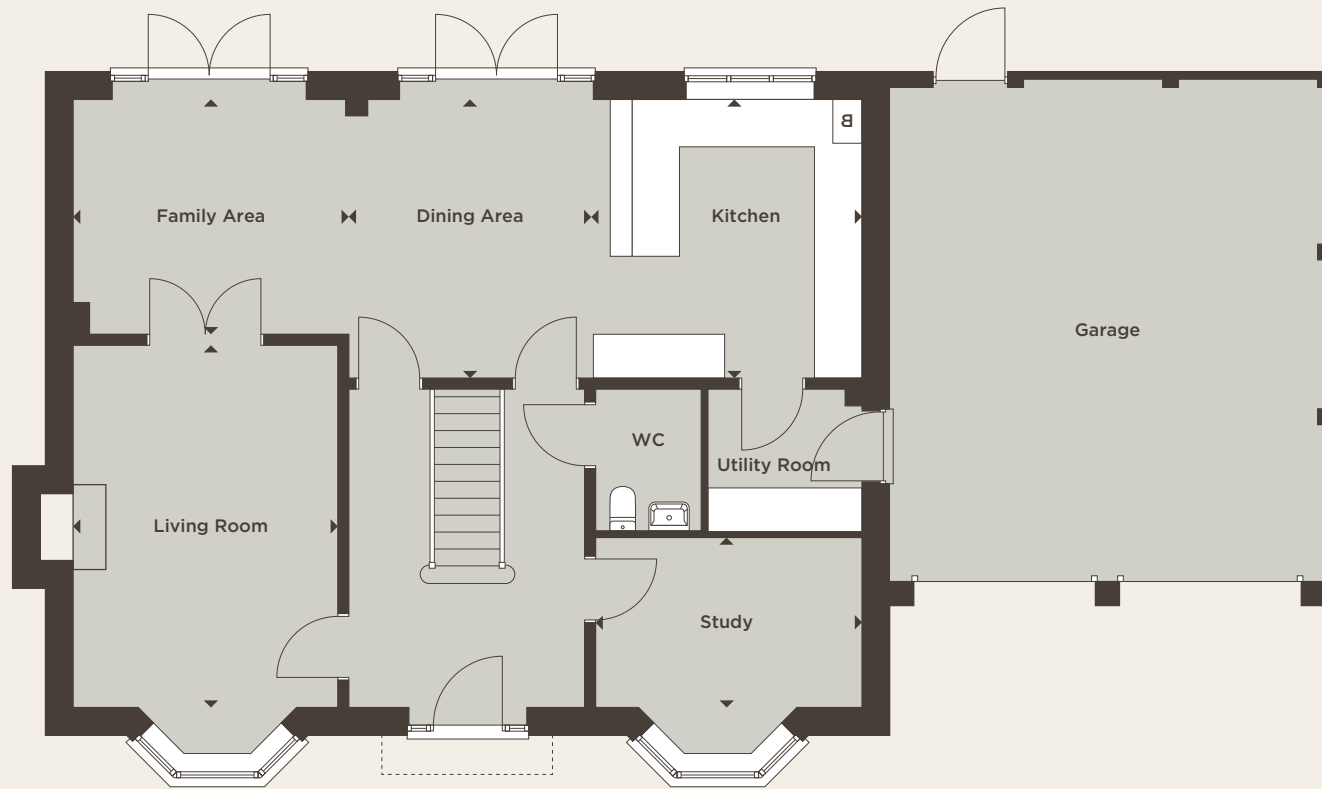


Five bedroom detached house

THE MAPLE

A superb five bedroom family home, built over two storeys with a double garage. The ground floor boasts an incredible open plan kitchen with fully integrated appliances plus a dining and family area. There is a separate living room, with double doors connecting to the family area and a feature bay window. A study, with bay window, completes the ground floor. On the first floor you will find the principal bedroom with en suite, a guest bedroom with en suite, two further bedrooms, the family bathroom and a fifth bedroom.

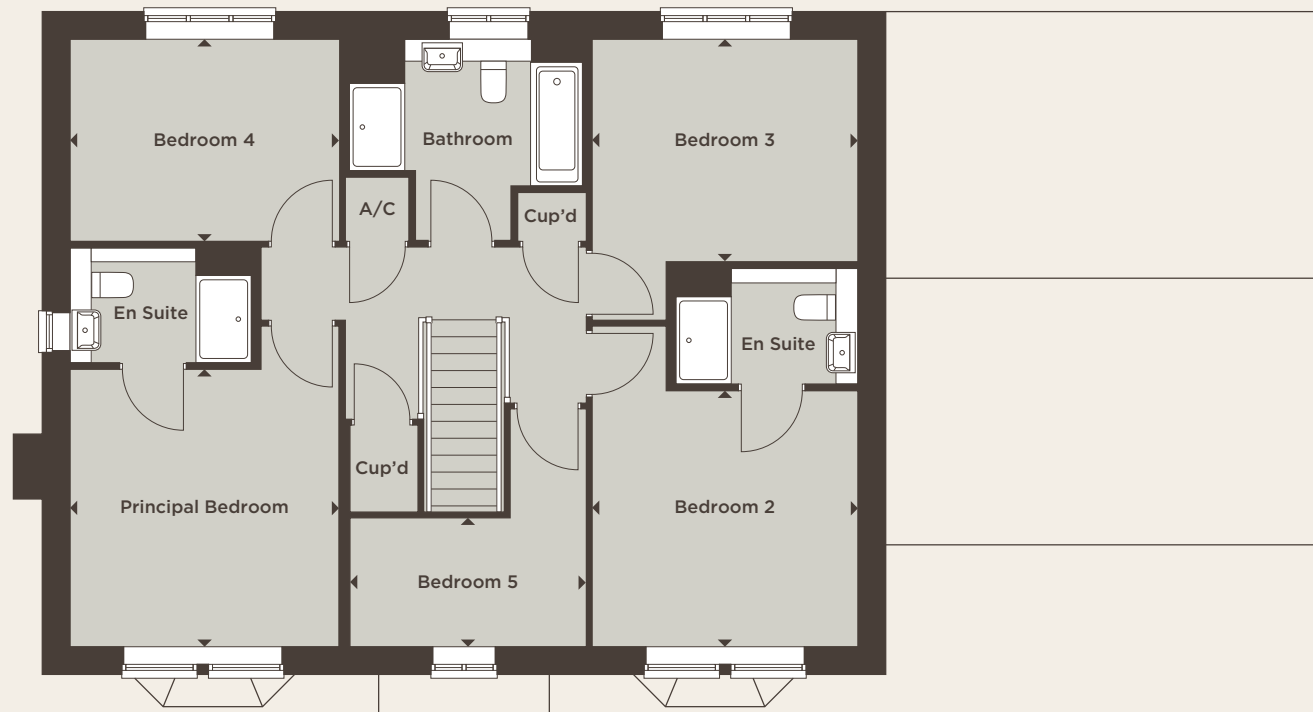
Total Internal Area 182.20 sq m 1960 sq ft



Ground Floor

Kitchen	3.82m x 3.71m	12'6" x 12'2"	Dining Area	3.82m x 3.32m	12'6" x 10'11"
Family Area	3.78m x 3.22m	12'5" x 10'7"	Study	3.65m x 2.33m	12'0" x 7'8"
Living Room	4.97m x 3.63m	16'4" x 11'11"			

Please note, this floor plan and computer generated image depicts a typical Maple house type, however some properties may vary from that shown. Please ask a Sales Consultant for full specific plot details.



First Floor

Principal Bedroom	3.81m x 3.70m	12'6" x 12'2"
Bedroom 2	3.72m x 3.51m	12'3" x 11'6"
Bedroom 3	3.72m x 3.06m	12'3" x 10'0"

Bedroom 4	3.70m x 2.77m	12'2" x 9'1"
Bedroom 5	3.30m x 1.77m	10'10" x 5'10"
Total Internal Area	182.20 sq m	1960 sq ft

Key

A/C Airing cupboard



WWW.STLUKESPARK.CO.UK



COUNTRYSIDE
Places People Love

Computer generated image, architectural detailing, materials and landscaping may vary from the illustration.
All sizes are approximate with maximum finished dimensions. Countryside operates a policy of continuous product development and all room layouts may be subject to minor modifications. Kitchen and bathroom layouts and floor tiling shown are indicative. Radiator locations are not indicated. Please refer to development layout to review garage variations for each plot. Please note some plots are handed. Please speak to Sales Consultants for detailed information regarding specific properties.