

THE WOBURN 4 bedroom house

FORNHAM
PLACE
at
MARHAM
Park



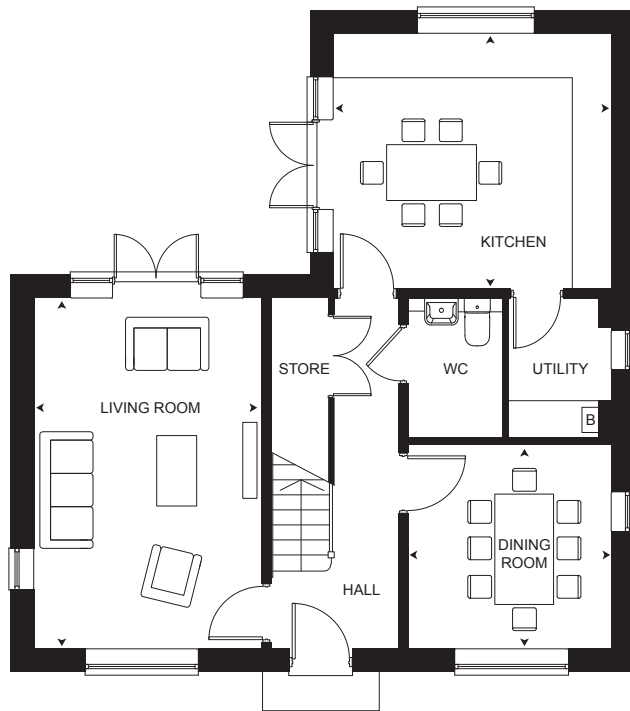
COUNTRYSIDE
Places People Love

THE WOBURN

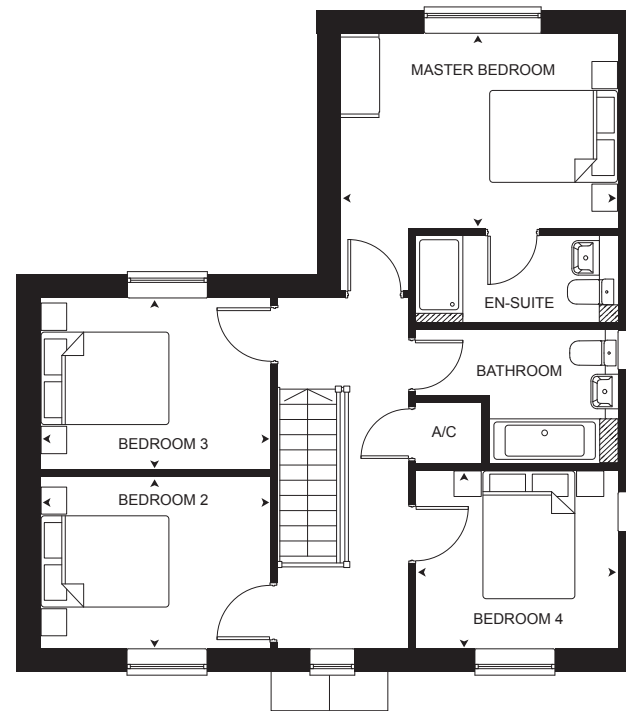
Plots 130, 131*, 135*, 139*, 142* & 210

FORNHAM PLACE at MARHAM Park

A traditional four bedroom detached house with garage. The triple aspect living room benefits from double doors leading out to the garden, the kitchen also opens onto the garden via double doors and boasts integrated appliances with a separate utility room. The formal dining room has double aspect windows and is the perfect place to entertain your guests. Upstairs, the master bedroom boasts en suite facilities, as well as three further double bedrooms ensuring space for all of the family.



GROUND FLOOR



FIRST FLOOR

GROUND FLOOR

KITCHEN
4.28m x 3.92m 14'1" x 12'10"

LIVING ROOM
3.49m x 5.39m 11'6" x 17'8"

DINING ROOM
3.13m x 3.12m 10'3" x 10'3"

FIRST FLOOR

MASTER BEDROOM
4.28m x 3.00m 14'1" x 9'10"

BEDROOM 2
3.55m x 2.65m 11'8" x 8'8"

BEDROOM 3
3.55m x 2.65m 11'8" x 8'8"

BEDROOM 4
3.13m x 2.75m 10'3" x 9'0"

Overall internal area
130.8 sq m 1408 sq ft

Plots with an attached garage: 131
Plots with a detached garage: 130, 135, 139, 142 and 210

B = Boiler * = Handed Plot

All room sizes are approximate showing maximum dimensions which have been taken into the kitchen units. They are to finished measurements and are not intended for carpet sizes or items of furniture. Countryside operates a policy of continuous product development and all room layouts may be subject to minor modifications. Kitchen and bathroom layouts shown are indicative only. Furniture arrangement is located in indicative positions. Please note boiler positions may be subject to change. Please ask your Sales Consultant for detailed information regarding specific properties. November 2020.



COUNTRYSIDE
Places People Love